

P425S Marine Bronze Motorpump™

2.5 Suction 2.5 Discharge
2 Pole 50-60 Hz 2900-3450 RPM



Pump

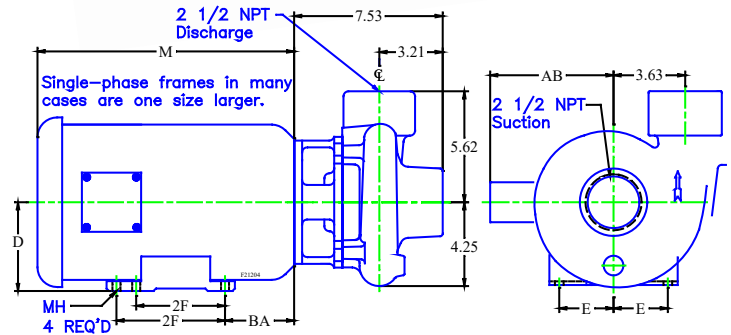
- Heavy-duty marine bronze pump with 954 bronze shaft sleeve for fresh water.
- Heavy-duty marine bronze pump with 954 bronze stub shaft for sea water.
- Precision machined to close tolerances for consistent performance.
- Hardware -
 - External - Type 300 stainless steel
 - Internal - Type 316 stainless steel
- Enclosed impeller for solids to 5/8 inch
- Designed for continuous 24/7 operation.

Shaft Seal

- Rated at 125 PSI
- Buna rubber parts, ceramic stationary element, carbon rotating element, seawater stainless steel spring and metal components

Motor

- Totally enclosed fan cooled IP-44 motors meet marine, European and Coast Guard ignition protected requirements.
- NEMA Premium Efficiency
- Sealed ball bearings
- Single phase motors must be ordered specifically for either 50 Hz or 60 Hz.
- Single-phase capacitor start
 - 50 Hz - 110/220 Volt
 - 60 Hz - 115/230 Volt
- Three-phase - nine lead dual voltage
 - 50 Hz - 190/380 Volt
 - 60 Hz - 230/460 Volt



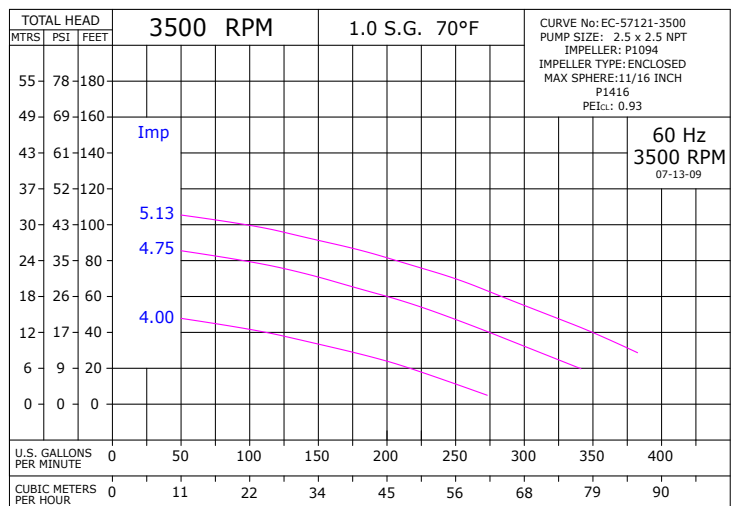
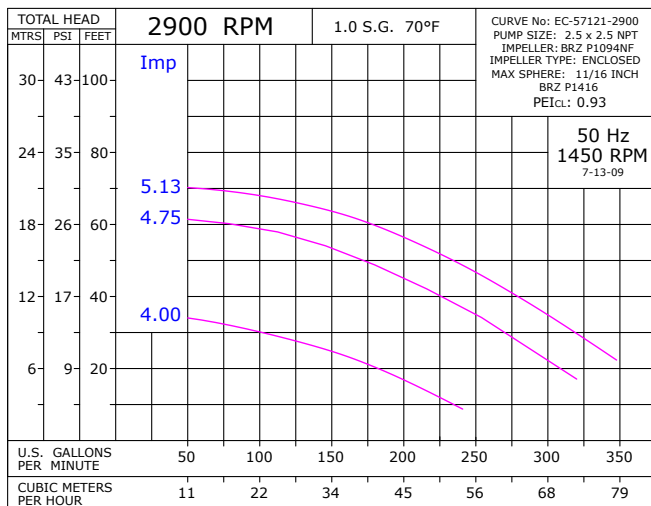
Motor Dimensions

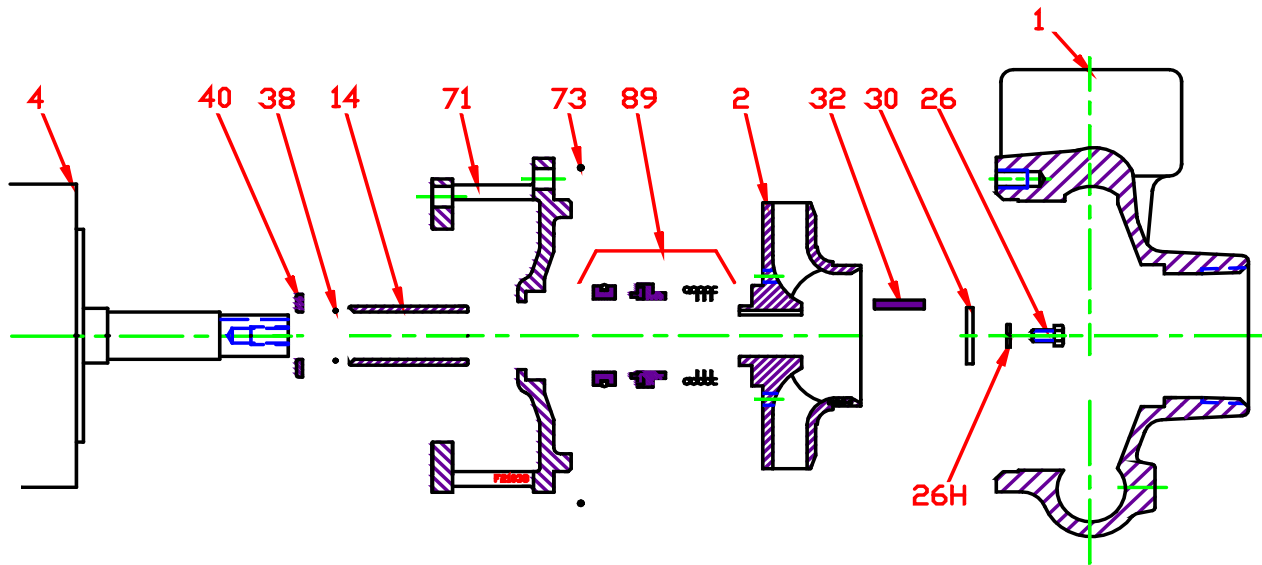
Frame	M	D	E	2F	AB	BA	MH
215	17.12	5.25	4.25	7.00	7.38	4.50	.41
184	14.12	4.50	3.75	5.50	5.88	3.50	.41
182	13.12	4.50	3.75	4.50	5.88	3.50	.41
145	12.12	3.50	2.75	5.00	5.25	2.88	.34

Impeller vs Motor HP

Imp	HP Ampere Table - 2900-3450 RPM TEFC						
	Motor HP		Frame	Single Phase		Three Phase	
	50 Hz	60 Hz		50 Hz	60 Hz	50 Hz	60 Hz
513	5	7 1/2	184	--	--	8.0	19.0
475	3	5	184	--	--	5.3	12.6
400	1 1/2	2	145	11.0	10.0	3.1	6.4

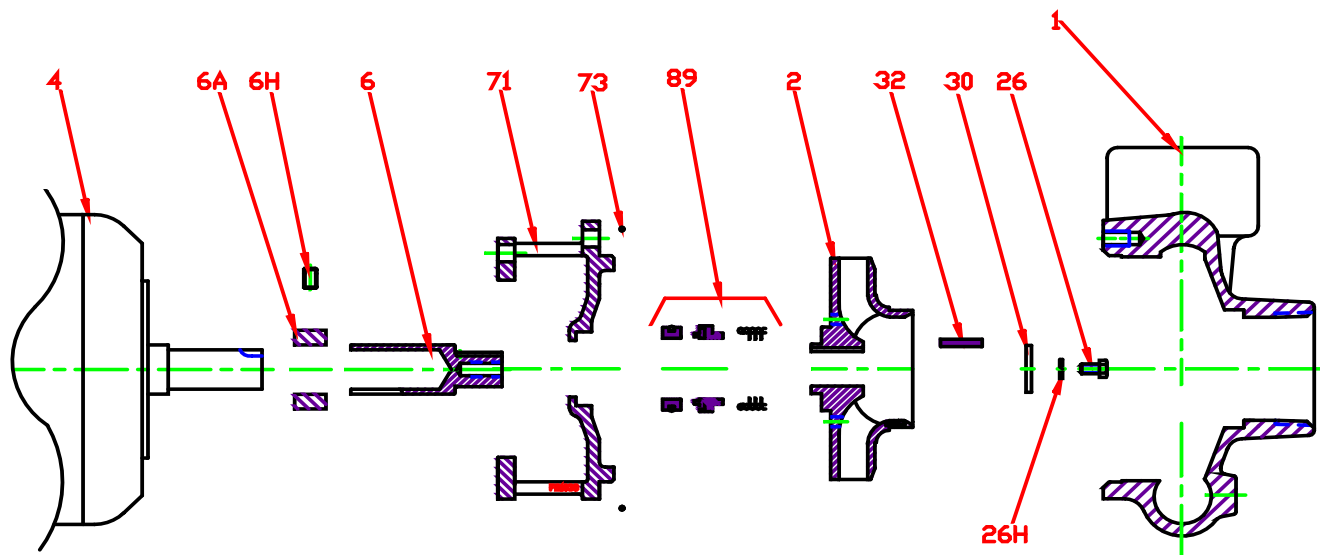
Single phase amps for 115V 60 Hz is double 230V amps
Three phase amps for 460V 60 Hz is one half 230V amps
Single phase 50 Hz motors are special order





Key No.	Part Name	Part Number
1	Case, Bronze, 2.5 x 2.5 NPT	130.000.274
2	Impeller, Bronze, 7/8" Key, Enclosed, 4.00"	131.000.805.400
	Impeller, Bronze, 7/8" Key, Enclosed, 4.50"	131.000.805.450
	Impeller, Bronze, 7/8" Key, Enclosed, 4.75"	131.000.805.475
	Impeller, Bronze, 7/8" Key, Enclosed, 5.13"	131.000.805.513
	Impeller, Bronze, 7/8" Key, Enclosed, 5.63"	131.000.805.563
4	Motor Chart, JM140/180, Stainless Shaft	See Chart
	Motor Chart, JM210, Stainless Shaft	See Chart
14	Shaft Sleeve, Bronze 954	189.001.215
26	Cap Screw, Stainless, Retainer	105.000.233
26H	Lock Washer, Stainless, Retainer	104.000.130
30	Washer, Stainless, Retainer	205.030.101
32	Key, Stainless	102.000.102
38	O-ring, Shaft, Buna	116.000.117
40	Flinger, Bronze	189.001.216
71	Adapter, Bronze, JM140/180	189.001.127
	Adapter, Bronze, JM210	Contact Factory
73*	Gasket, Case, Buna	116.000.146
89*	Seal, 1-1/4", Type 21, BN-CARB/CM	101.000.104
KIT	Repair Kit, 1-1/4" BN-CARB/CM Seal	189.001.118

* Denotes components included in seal and gasket kit.



Key No.	Part Name	Part Number
1	Case, Bronze, 2.5 x 2.5 NPT	130.000.274
2	Impeller, Bronze, 7/8" Key, Enclosed, 4.00"	131.000.805.400
	Impeller, Bronze, 7/8" Key, Enclosed, 4.50"	131.000.805.450
	Impeller, Bronze, 7/8" Key, Enclosed, 4.75"	131.000.805.475
	Impeller, Bronze, 7/8" Key, Enclosed, 5.13"	131.000.805.513
	Impeller, Bronze, 7/8" Key, Enclosed, 5.63"	131.000.805.563
4~	Motor Chart, JM140/180, Carbon Steel Shaft	See Chart
	Motor Chart, JM210, Carbon Steel Shaft	See Chart
6	Shaft, Bronze 954	189.001.160
6A	Collar, Bronze	189.001.129
6H	Set Screw, Stainless	189.001.161
26	Cap Screw, Stainless, Retainer	105.000.233
26H	Lock Washer, Stainless, Retainer	104.000.130
30	Washer, Stainless, Retainer	205.030.101
32	Key, Stainless	102.000.102
71	Adapter, Bronze, JM140/180	189.001.127
	Adapter, Bronze, JM210	132.000.222
73*	Gasket, Case, Buna	116.000.146
89*	Seal, 1-1/4", Type 21, BN-CARB/CM	101.00.104
KIT	Repair Kit, 1-1/4" BN-CARB/CM Seal	189.001.118

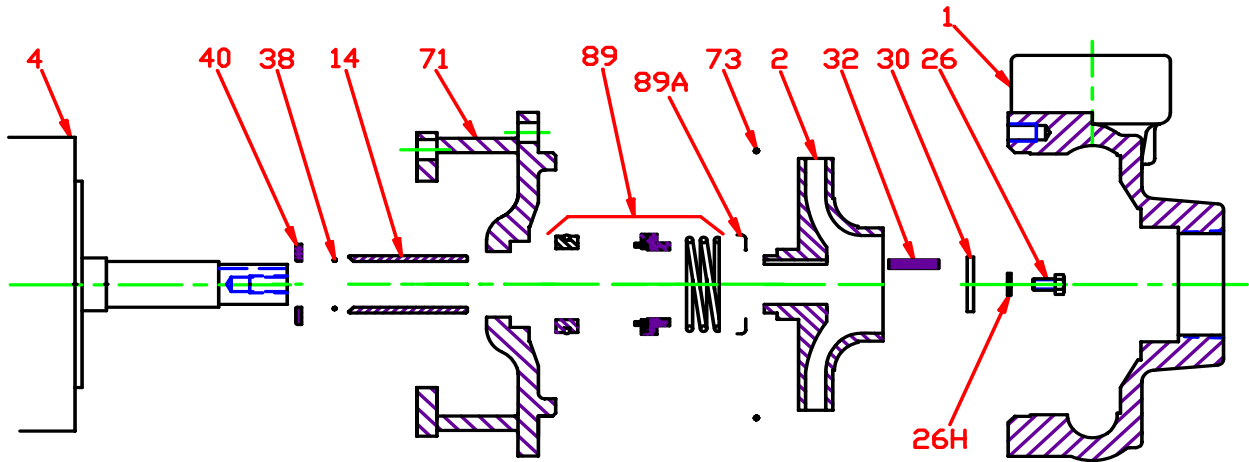
* Denotes components included in seal and gasket kit.

~ Motor shaft requires modification; contact factory.

F21371-1

F19

Pump 57121 • Style S • Bronze • JM Frame



CONSTRUCTION OPTIONS		
KEY	PART NAME	ALL BRONZE
1	Case	Bronze
2	Impeller	Bronze
14	Shaft Sleeve	Bronze
26	Imp. Retainer Screw	Stainless
26H	Imp. Retainer Lockwasher	Stainless
30	Imp. Retainer Washer	Stainless
32	Key	Stainless
38	Shaft O-Ring	BUNA
40	Flinger	Bronze
71	Adapter	Bronze
73	Gasket, Case	BUNA
89	Mechanical Seal, Type 21 BN-CARB/CM	Standard

F21385-1

F17

C57121-S