

**Sanitarios y Suites de Baño**

# Serie Impact



La gama Impact incluye todo el set de productos para el baño.

La alta velocidad de rotación de la bomba de vórtice y el diseño geométrico de la tubería de todos los equipos Planus permiten crear un gran vacío capaz de eliminar el agua y los residuos orgánicos de la taza. El alto nivel de rendimiento garantizan la máxima flexibilidad en la planificación de la ruta de las mangueras de descarga, que le permite alcanzar distancias y alturas importantes.

| Serie Impact     |                          |
|------------------|--------------------------|
| Referencia       | Descripción              |
|                  | Standard                 |
| PLIMPACT-12V     | WC IMPACT 12V            |
| PLIMPACT-24V     | WC IMPACT 24V            |
| PLIMPACT-230V    | WC IMPACT 230V           |
| PLIMPACT-12V/WJ  | WC IMPACT 12V WATER JET  |
| PLIMPACT-24V/WJ  | WC IMPACT 24V WATER JET  |
| PLIMPACT-230V/WJ | WC IMPACT 230V WATER JET |
| PLIMPACT BIDET   | BIDET IMPACT             |

**TECHNICAL SPECIFICATION OF THE MAIN COMPONENTS**

**Vortex Discharge Pump**

|   |            |        |        |         |
|---|------------|--------|--------|---------|
| Hydraulic performances: up to 9 m vertically, up to 80 m horizontally | Voltage    | 12 Vdc | 24 Vdc | 230 Vac |
|   | Absorption | 35 A   | 25 A   | 3 A     |

**Inlet Electrovalve**

|   |            |        |        |         |
|---|------------|--------|--------|---------|
| <b>DIRECT ACTING</b> Version (for both fresh water and sea water inlet systems) | Voltage    | 12 Vdc | 24 Vdc | 230 Vac |
|   | Absorption | 80 W   | 80 W   | 80 W    |
| <b>SERVO PILOTED</b> Version (for fresh water inlet only)                       | Voltage    | 12 Vdc | 24 Vdc | 230 Vac |
|   | Absorption | 15 W   | 15 W   | 15 W    |

**Independent Inlet Pump**

|            |        |        |         |
|------------|--------|--------|---------|
| Voltage    | 12 Vdc | 24 Vdc | 230 Vac |
| Absorption | 3.6 A  | 1.8 A  |         |

**Centralized Inlet Pump (not supplied)**

|                            |                  |                     |
|----------------------------|------------------|---------------------|
| Recommended specifications | Working Pressure | Min 1 bar—Max 3 bar |
|----------------------------|------------------|---------------------|

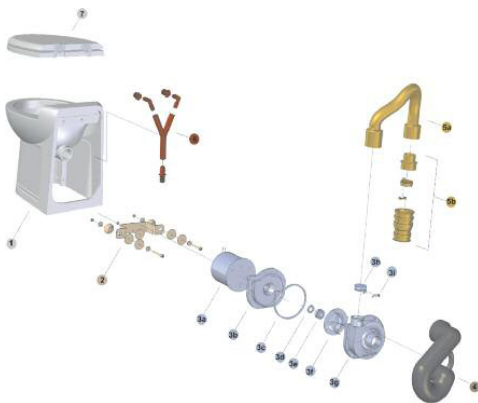


Discharge pressure 0.9 bar (9m)

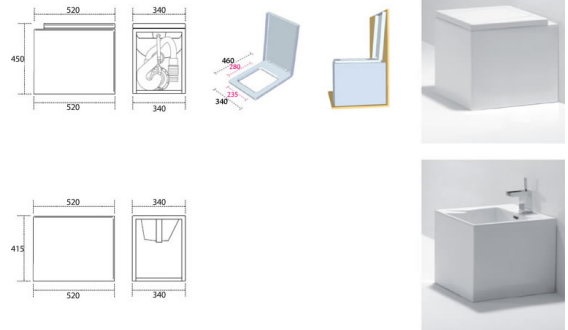


Up to 80 m

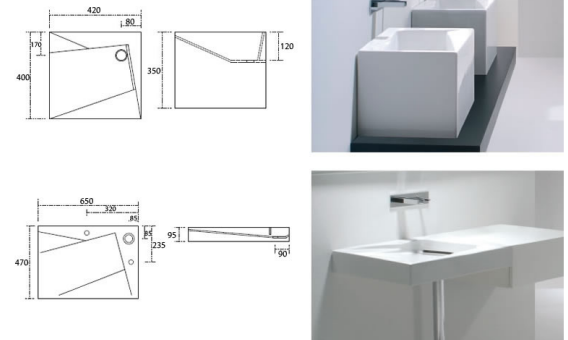
|    |                              |      |           |
|----|------------------------------|------|-----------|
| 1  | CERAMIC BOWL                 |      |           |
| 2  | COMPLETE FIXING BRACKET      |      | PW.026.00 |
| 3  | VORTEX OUTLET PUMP           | 12v  | PW.001.00 |
|    |                              | 24v  | PW.002.00 |
|    |                              | 230v | PW.034.00 |
| 3a | Motor                        | 12v  | 04.001.00 |
|    |                              | 24v  | 04.002.00 |
|    |                              | 230v | 04.025.00 |
| 3b | Flange for pump              |      | 02.005.00 |
| 3c | Sealing for pump             |      | 03.006.00 |
| 3d | Stationary seal for impeller |      | 05.001.00 |
| 3e | Rotatory seal for impeller   |      | 05.002.00 |
| 3f | Impeller                     |      | 02.004.00 |
| 3g | Housing for pump             |      | 02.003.00 |
| 3h | One-way valve                |      | 03.005.00 |
| 3i | Clamp for one-way value      |      | 02.009.00 |
| 4  | SIPHON HOSE                  |      | PW.003.00 |
| 5  | DISCHARGE HOSE COMPLETE      |      | PW.005.00 |
| 5a | Discharge hose               |      | 03.002.00 |
| 5b | One-way valve - Assembly     |      | PW.006.00 |
| 6  | INLET PIPE                   |      | PW.007.00 |
| 7  | SEAT & COVER                 |      |           |



Toilet and bidet



Wash basin 42/65



CONNECTIONS

Hydraulic Connections

|        |                                |
|--------|--------------------------------|
| Inlet  | Hose with ID of 20 mm (3/4")   |
| Outlet | Hose with ID of 40 mm (1 1/2") |

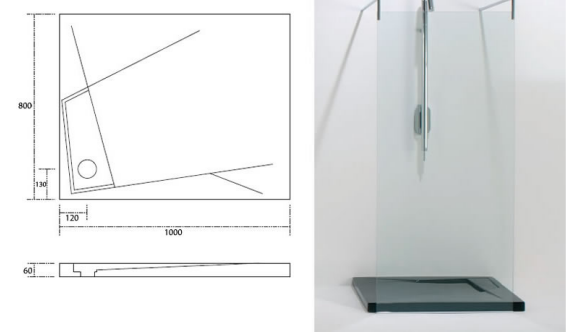
Electrical Connections

| Voltage                      | 12 Vdc                     | 24 Vdc                     | 230 Vac                       |
|------------------------------|----------------------------|----------------------------|-------------------------------|
| Minimal wire gauge up to 5 m | 6 mm <sup>2</sup> (9 AWG)  | 4 mm <sup>2</sup> (11 AWG) | 0.75 mm <sup>2</sup> (18 AWG) |
| Minimal wire gauge over 5 m  | 10 mm <sup>2</sup> (7 AWG) | 6 mm <sup>2</sup> (9 AWG)  | 1 mm <sup>2</sup> (17 AWG)    |

INFO

- Weight:** 26kg (High Version) - 23.5 kg (Short Version)
- Average Water Consumption:** 1.5 l
- Color:** White (black or bone optional)
- Seat:** Wood covered with casting resin
- Hinges:** Stainless steel (soft closing system optional)
- Integrated bidet:** Optional

Shower tray



Bath tub

