

Important: Place in owner's manual



**SKYSCREEN
ROLLER CONCEALED 2
(Including Trims)**

Model No:

Date:

Fitting Instructions

Please read before beginning installation

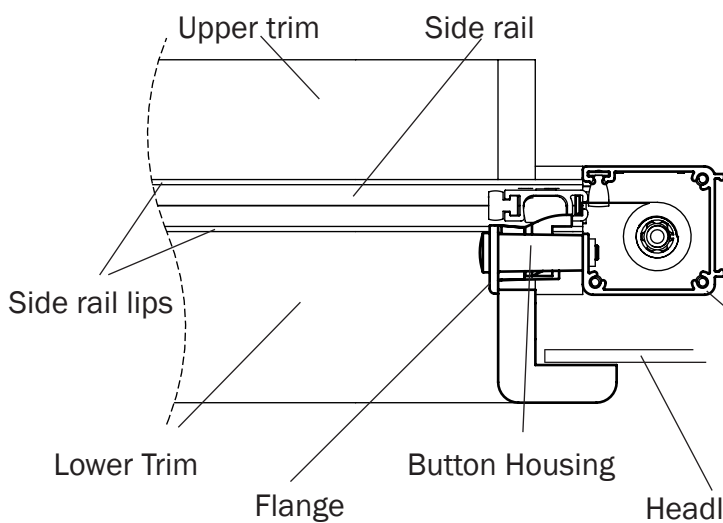
Unit must be Installed so that it can be
Removed for Servicing

Fitting, Care & Maintenance Instructions

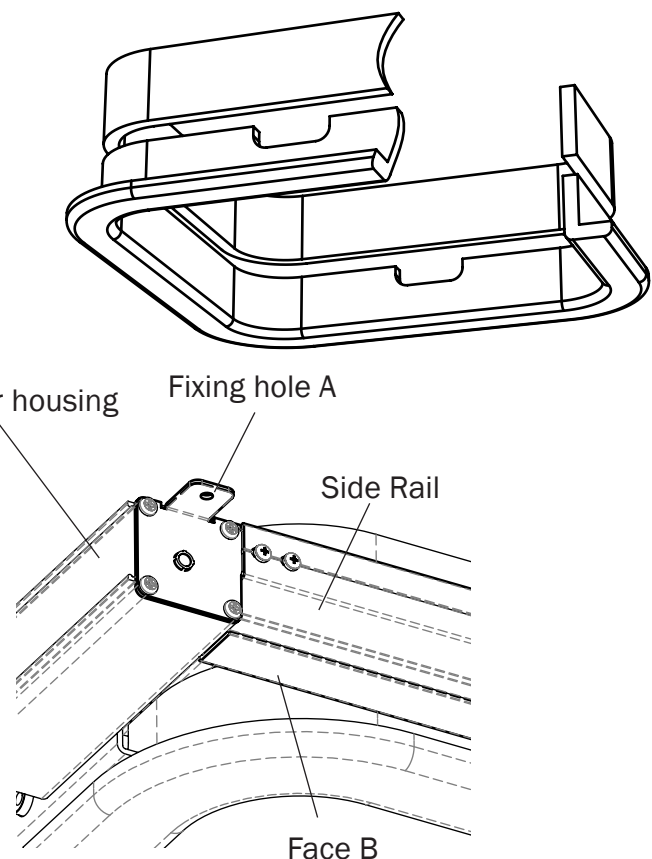
Installation

- Fit the upper trim first.
- Locate the blind around the upper trim sitting the bottom edge of the upper trim on the top lip on the inner face of the side rails.
- The blind cassette and upper trim is then held in position using 4 screws, one in each corner (Hole A).
- The blind must not be distorted when installed as this can cause excess friction and might make the blind jam.
- Ensure that the lower edge of the upper trim and the upper edge of the lower trim are square to the blind and the correct length.
- Cut a recess for the button housing in the lower trim using the information provided on pages 5 or 6 (trims supplied by Oceanair are pre-cut)
- The flange on the button housing should sit against the inside face of the lower trim.
- Fit the headlining to the lower flange of the side rails (Face B) using Velcro or other fixings. If the headlining is lower than the flange then use spacers as necessary.
- Fit the lower trim aligning the cutouts with the button housings and sitting the upper edge to the lower lip on the side rails.
- An alternative method is the optional “Wood lower trim secret fixing kit” which suspends the lower trim from the button housings. (page 4)
- **IMPORTANT: The unit must be installed in such a way that it can be removed for servicing.**
- **Do not screw into the roller housing for any reason as this will damage the fabric.**

Roller cover section



Upper and Lower Trim



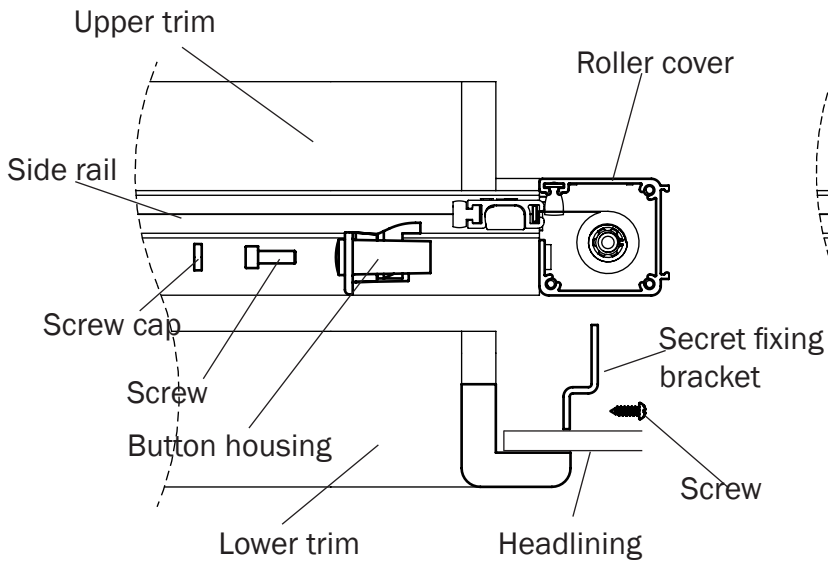
Operation

- To unlock - push the button which will eject the crossbar enabling you to operate the blind using the handle slots in the crossbar.
- Draw the blind or flyscreen to the opposite side until the magnets on the crossbars touch and hold together
- To open - push crossbars apart which will force the magnets apart and enable the blind or flyscreen to be returned to its recess – should you let go of a crossbar the springs in the ends will give a cushioned landing. The crossbars require pushing back into their recesses against the springs to lock them home flush.

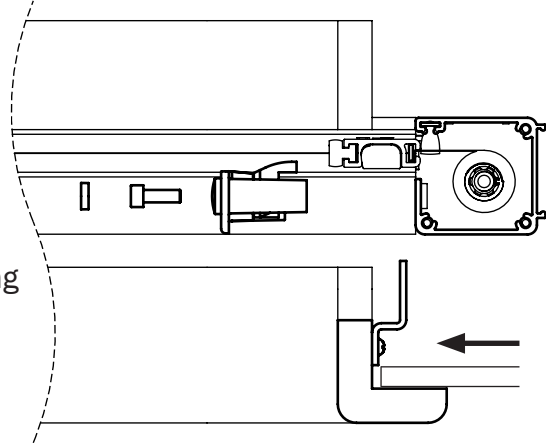
Care & Maintenance

- Light lubrication of the runners ensure a smooth operation - never use a grease or oil - a silicon spray is ideal.
- The fabric is a coated polyester woven fabric. If it gets wet pull out the blind and leave to dry naturally. Small marks can be removed using an eraser.
- In the event of either the blind or the screen being damaged either part may be replaced. For spare parts see parts list on page 7.
- Instructions are available for servicing and re-tensioning (which involves disassembly) from Oceanair.
- For further information or installation assistance, please contact your local distributor.

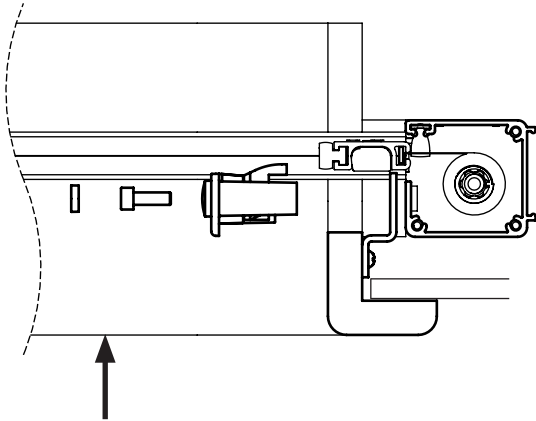
Wood Lower Trim Secret Fixing Kit



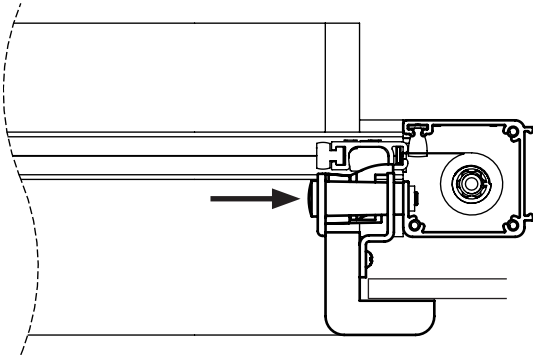
Step 1 fit secret fixing bracket to lower trim



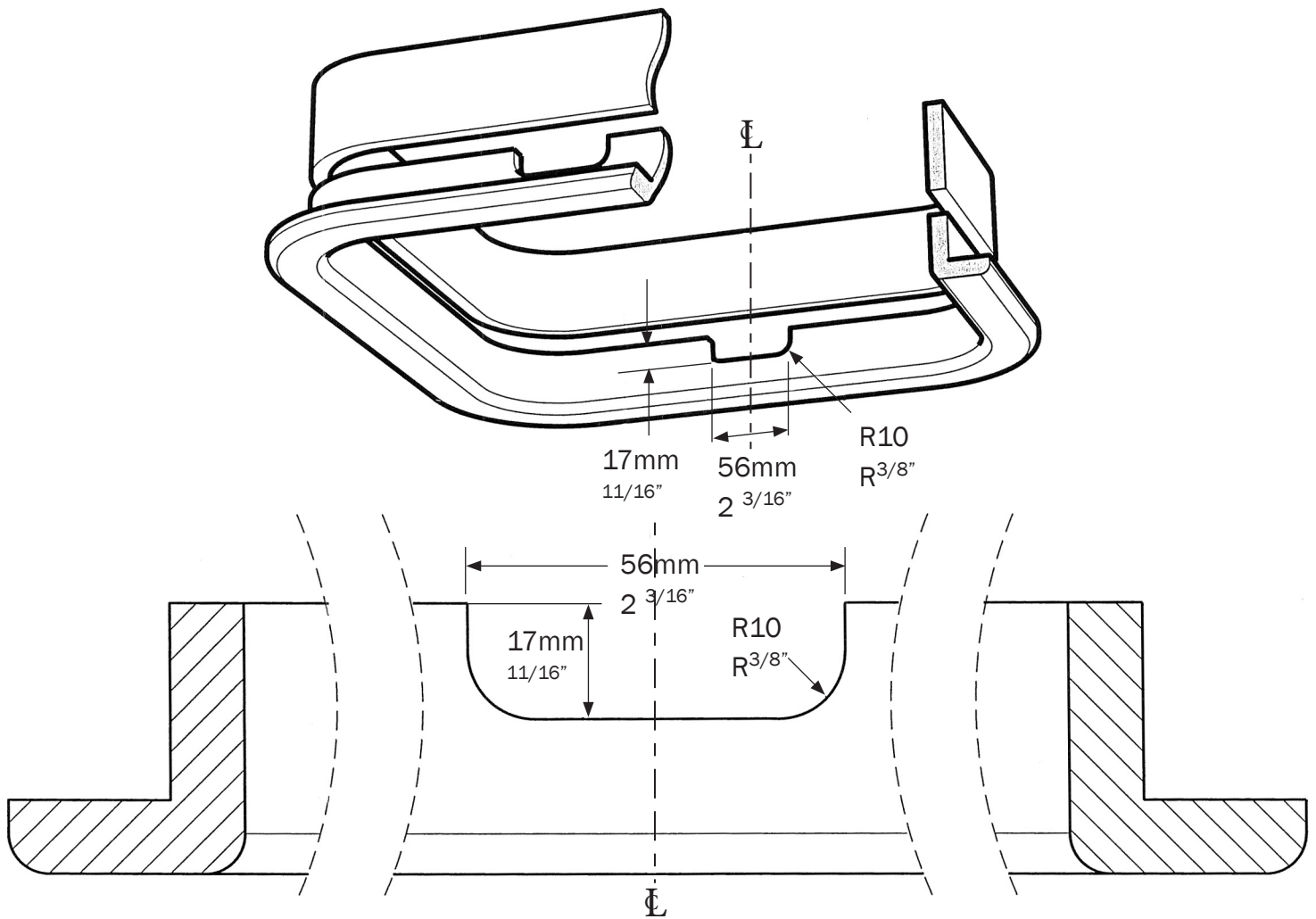
Step 2 position lower trim



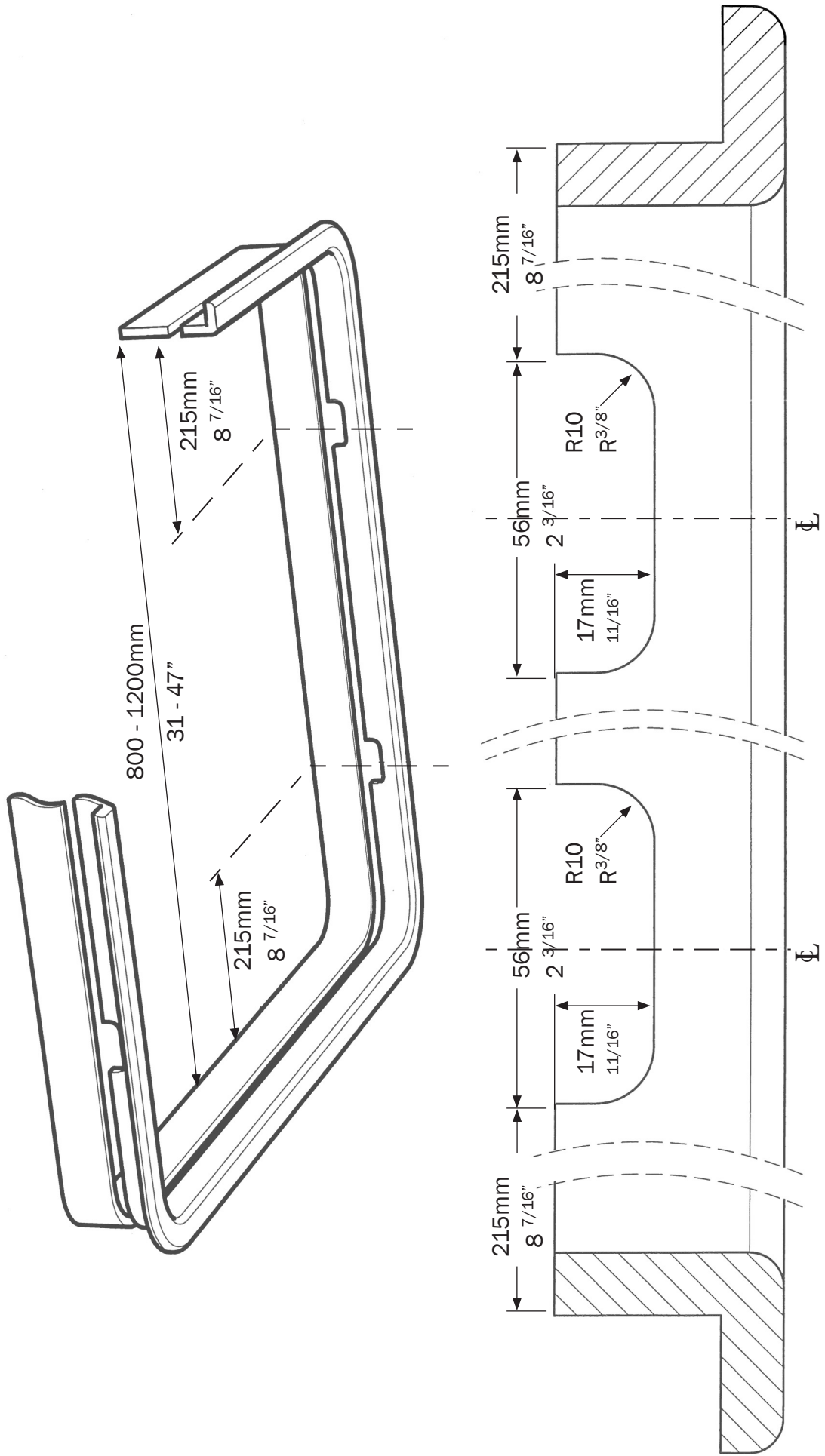
Step 3 fit button housing



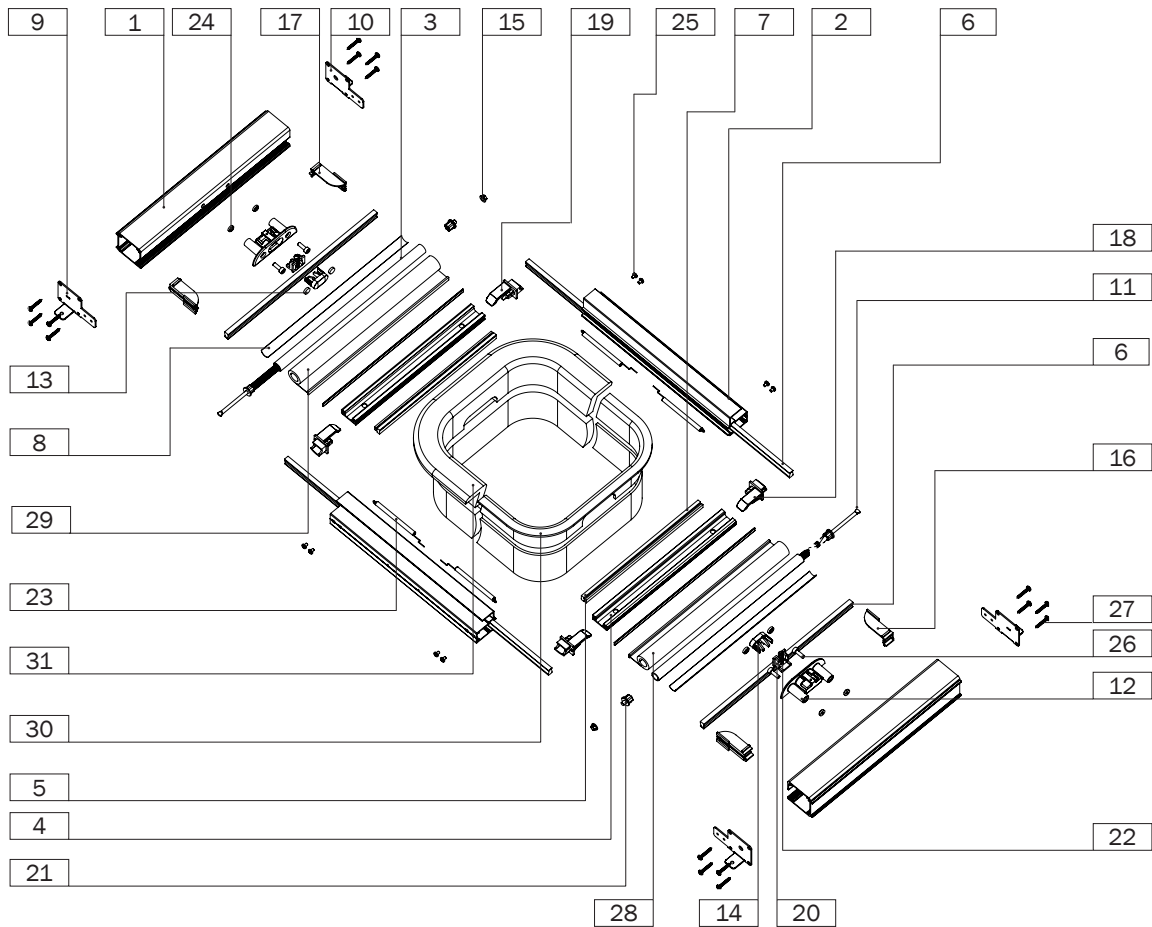
Wood trim cut out dimensions and positioning for single Button Housing (blinds under 800mm)



Wood trim cut out dimensions and positioning for two button housings
 (blinds over 800mm)



Parts List



No.	Part No.	Description	No.	Part No.	Description
1	12828960005	Roller Cover	15	41872380003	Plate Bearing
2	11808770005	Side Rail	16	41872380003	LH Pusher
3	10053150000	Roller	17	41872380003	RH Pusher
4	11872660005	Crossbar	18	41872370003	LH Crossbar End cap
5	11808600000	Magnet	19	41872370003	RH Crossbar End cap
6	11808830004	Brush Strip (please specify length)	20	41872370003	Hook
7	400000526	Cloth Strip	21	400001890	Roller Bearing
8	50020520000	Double sided Tape	22	4180950000	Hook Spring
9	41860030000	LH Endplate	23	41814310000	Pusher Spring (4 off)
10	41860040000	RH Endplate	24	43668490000	M4 Clinch Nut (4 off)
11	40065410000	Spring	25	400000625	M3 x 4 mm Screw (8 off)
12	41872360003	Button Housing (White)	26	41872550000	M4 x 12 mm Screw (4 off)
	41866590003	Button Housing (Dark Grey)	27	40062100000	No. 6 x 19mm Screw (16 off)
	400000173	Button Housing (Chrome)	28	10104970001	Flyscreen Fabric (1 off)
13	41872360003	Button Housing Screw Cap (White) (4 off)	29	See Fabric Collection	Blackout Fabric (1 off)
	41866590003	Button Housing Screw Cap (Dark Grey) (4 off)	30	Build Dependant	Aluminium Liner (1 off)
14	41872380003	Button	31	Build Dependant	Wood Liner (1 off)

- All Parts 2 off unless stated
- For SKYSCREEN with Wood trim omit item 30.
- For SKYSCREEN with Aluminium Liner, omit item 29.

