

# SKYSCREEN ROLLER RECESSED

## Assembly & Fitting Instructions

### Contents

2 x Fly and blind cassette (A).

2 x Side Rail (B).

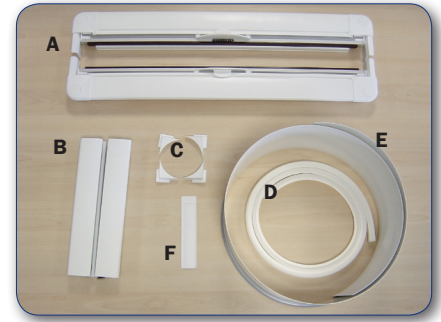
4 x Internal Corner Adapters as ordered (C),  
radius available : 32mm [1 ¼"], 42mm [1 7/8"] and 50mm [2"].

Optional:

1 x Seal (D).

1 x Liner (E).

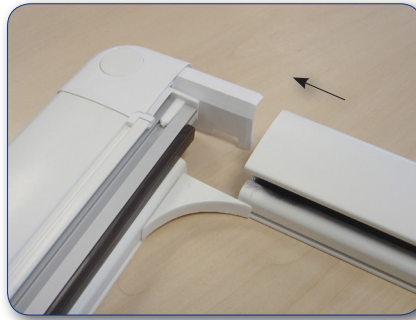
1 x Liner joining strip (F).



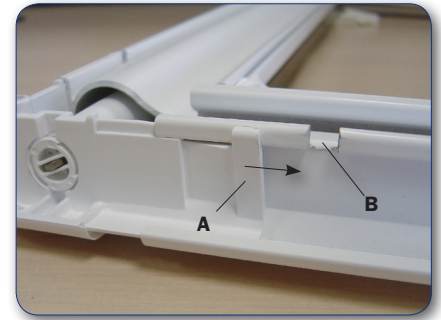
### Assembly



1. Slide corner adapters (C) into grooves in fly and blind cassette.



2. Attach the side rails (B) to the fly and blind cassettes (A).

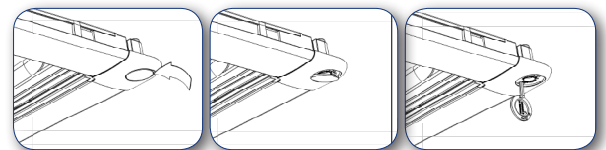


3. Align corner legs and adapters with grooves in side rails. Push and slide into place clicking the catch (A) into notch (B)

### Fitting

- Hold the SKYSCREEN up to the aperture. Ensure the surrounding headlining does not pinch/jam the SKYSCREEN. The base and surrounding area must be flat and even.
- Unit may be fitted with Seal or HATCHLINER – see separate instructions overleaf.
- Fasten using the fixing holes in the corner mouldings under the covers (remove covers as shown in diagram).
- No 6 x 30mm [1 ¼"] self tapping screws (pan head) are recommended. Preload the screw into the hole before turning the unit over.
- **Do not use screws larger than No. 6.**
- Do not over recess the SKYSCREEN into the headlining, or over tighten the screws, as this will distort the unit and affect the smooth operation of the SKYSCREEN. Do not use the edge of the SKYSCREEN to support the headlining.
- Replace screw covers.

Removal of screw covers

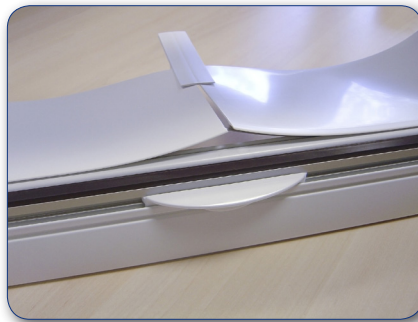
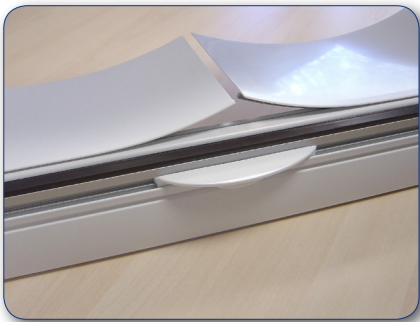


### Care & Maintenance

- From time to time use a silicon spray to lubricate the runners. Never use grease or oil.
- The spring systems are stainless steel and require no servicing. The tension can be altered to adjust the recoil. To alter the tension see overleaf.
- The fabric is water resistant. If it gets wet, pull out the blind and leave to dry naturally. Marks can be removed by wiping clean with a damp cloth.
- Replacements parts are available in the event of damaged or loss.

## HATCHLINER & Fitting Instructions

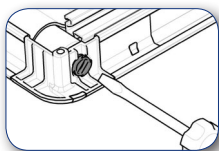
1. When cutting the deck aperture for the hatch, make sure there is a 2mm gap around the hatch to allow the HATCHLINER to fit behind the hatch down-flange.
2. The SKYSCREEN must be mounted directly underneath the hatch to ensure correct alignment.
3. Measure the distance between the hatch down-flange and the SKYSCREEN to determine whether the HATCHLINER needs to be trimmed down in height. Allow a minimum overlap behind the hatch down-flange of 6mm ( ¼"). The HATCHLINER can be cut with strong scissors or a blade. For the best results, score and break.
4. The HATCHLINER will normally be cut to the correct length to suit the inside perimeter of the SKYSCREEN that it is supplied with. It should not need adjustment.
5. Press the grip feature on the back face of the HATCHLINER into the slot around the inside edge of the SKYSCREEN. Begin the installation directly above the handle of the SKYSCREEN. Push the HATCHLINER firmly into the recess, especially around the corners.
6. The two ends of the HATCHLINER are joined using the joint extrusion provided. To fit, enter each end of the liner into the slots on each side of the joint extrusion and press into position.



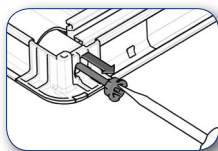
## Tensioning

Blind tension is factory set but may be adjusted to suit local conditions by following the diagrams below. Any adjustment must be made with the screen in the same plane as it would be when installed. Should all tension be lost no more than **5 revolutions** is required.

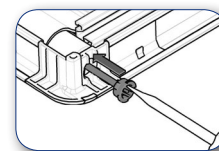
Note: Adjustments cannot be made with the screen installed.



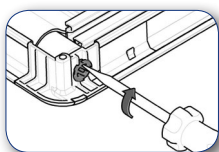
1. Insert a screwdriver into the tensioner in one of the 'D' shaped recesses.



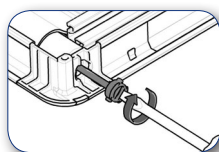
3. Gently withdraw the tensioner. The spring rod should push tensioner out, ensure the tensioner stays engaged in the screwdriver.



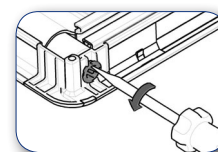
5. To replace the tension, align the lugs and push it back into the corner moulding.



2. Rotate the tensioner clockwise to unlock it.



4. Twist the screwdriver clockwise to increase the tension, anti clockwise to reduce tension.



6. Rotate the tensioner anti clockwise to lock it.