

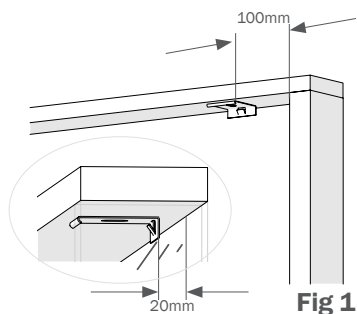
Installation Instructions**Chain Control – Free Hanging****Pack contains**

- 1 x Headrail and blind
- 2 or 3 x Headrail mounting brackets depending on width of blind.

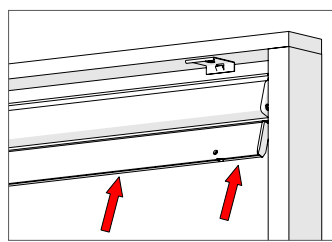
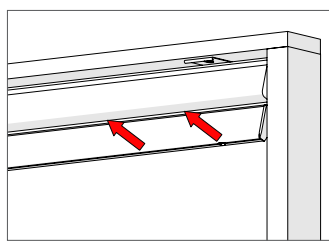
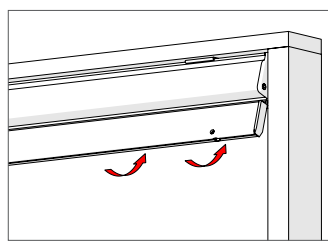
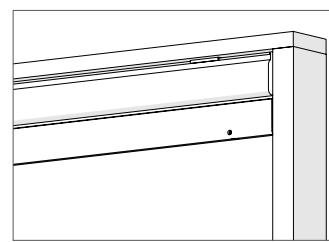
Installation Method

1. Check headrail and blind is the correct size for the recess.

2. Fit the mounting brackets to recess. Brackets to be positioned 100mm from each end of the headrail, and if the headrail is over 700mm wide then one bracket should be fitted centrally. Ensure the brackets are in line if 3 are fitted. Use a 5mm diameter pan head fixing of the appropriate length and type for the substrate being fixed to. Leave a minimum of 20mm between the back of the bracket and the window (fig 1)



3. Clip the headrail in place into the mounting brackets, so that the blind is central to the window, and check the headrail is secure. (fig 2 to fig 5)

**Fig 2****Fig 3****Fig 4****Fig 5**

4. Check the operation of the blind.

Note:

This blind is not suitable to be located where children under the age of 42 months are allowed.

WINDOWSHADE 2 SOLARSHIELD

Installation Instructions

Chain Control – Guide Wire

Pack contains

- 1 x Headrail and blind
- 2 or 3 x Headrail mounting brackets depending on width of blind.
- 2 x Guide wire hold down
- 2 x Barrel Bolt for Guide wire hold down

Installation Method

Follow steps 1 to 3 on page 1 and then carry out the following steps for the fitting of the guide wires.

1. Fix one of the base fixings for the Guide wire hold down, so the guide wire is parallel to the edge of the recess, using 3.2mm diameter countersunk head fixing of the appropriate length and type for the substrate being fixed to (fig 6).

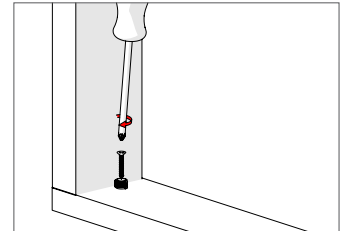


fig 6

2. Slide the hold down dome onto the guide wire and then the barrel clamp, and pulling the guide wire taut fix the barrel bolt so that the lower face is 1mm above the installation base. Screw on the hold down dome and check that the guide wire is taut. Repeat for the second guide wire hold down, ensuring the two guide wires are parallel. (fig's 7 & 8)

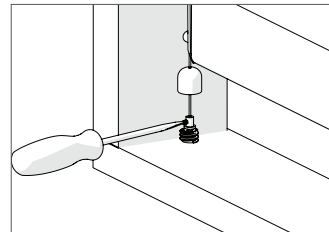


fig 7

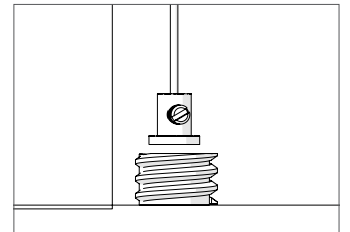


fig 8

3. Check the operation of the blind .