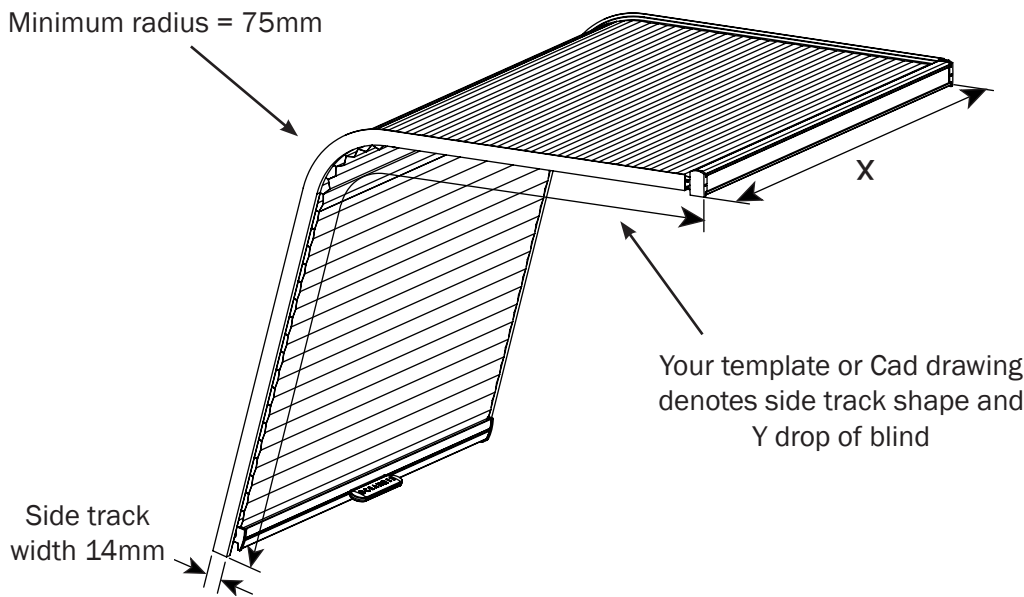


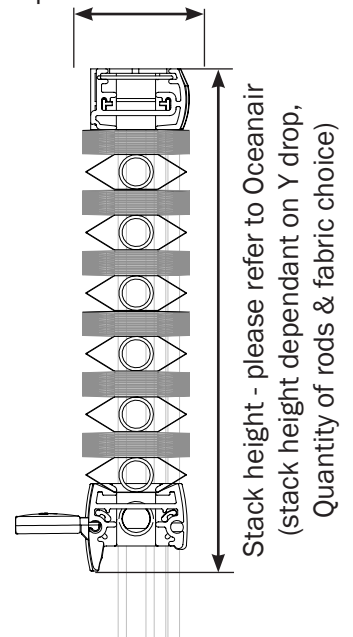
Minimum radius = 75mm



Side track width 14mm

Your template or Cad drawing denotes side track shape and Y drop of blind

Recommended minimum recess depth
manual = 50mm
powered = 75mm

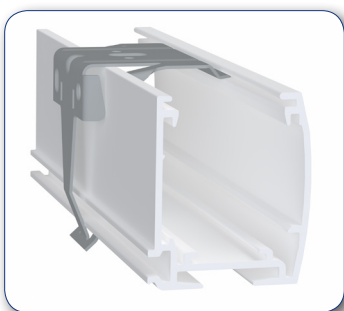


Design / Technical Points

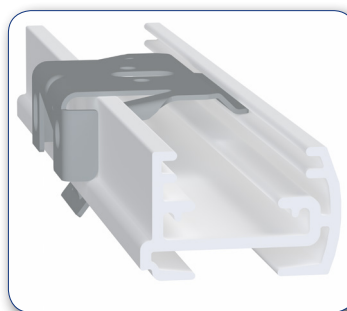
- Manual companionway blind designed specifically for curved installations.
- Maximum recommended blind size 1200mm (47¼") wide by 2000mm (73¾") drop. Outside these sizes, please contact Oceanair.
- Fabric is 25mm Honeycomb cellular polyester available in variety of colours, opaque and blackout.
- Aluminium cross bar and headrail are available in white, beige, graphite or custom colour finish.
- Aluminium side tracks are available in white, beige, aluminium or custom colour finish.
- Aluminium Internal rods with gliders for stability and durability.
- Fast and simple to fit using Oceanair's proven spring clip system, fixing bracket with headrail depth - manual 26mm / powered 33mm.
- Concealed cord tension system.
- Top and bottom must be parallel, as must the sides (Up to 10mm tolerance for variable hatch widths).
- Top and bottom stacking options.
- Top or face mount.
- Powered option also available – please contact Oceanair.
- On blackout blnds, there will be light bleed around edge of blind (between fabric and sidetrack)

How to order

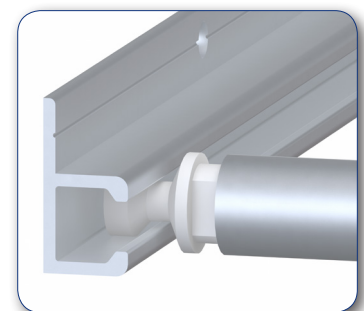
- Complete the STS custom order form (document No. OAT00130)
- Templates/CAD drawings will be needed for curved track profile.



Headrail for powered blind operation



Headrail for manual blind operation



Side track, glider & internal rod detail