

PRODUCT INFO

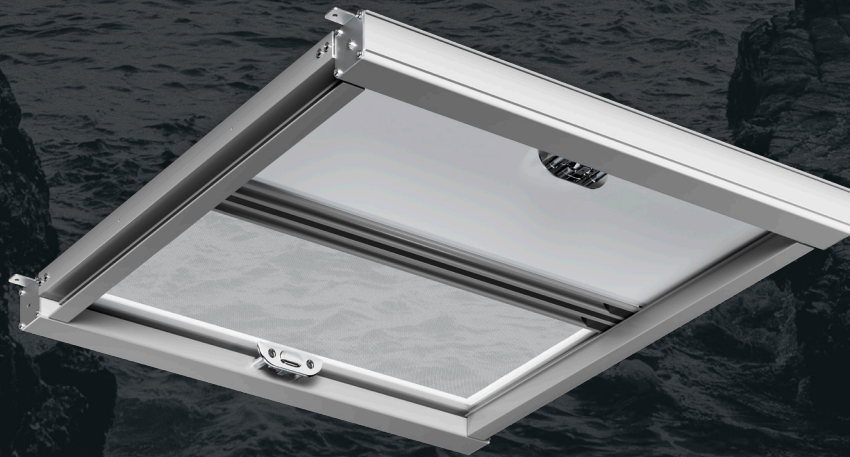
# DOMETIC OCEANAIR SKYSCREEN CONCEALED

Designed to be concealed within the headlining, Skyscreen Concealed features stylish push-release buttons to reveal the fabric blinds. The blinds can be fully stowed back into the unit, leaving a completely clear aperture and unobstructed views outside.

**EASY TO USE**  
QUICK RELEASE BUTTONS

**DESIGNED TO FIT**  
CUSTOMER TRIMS

**COMPLETELY CLEAR**  
**APERTURE**



QUICK RELEASE  
BUTTONS



RECOIL  
DAMPER



BLACKOUT &  
FLYSCREEN

Mobile living made easy.

 **DOMETIC**



# ROLLER HATCH SCREEN COMBINATION BLIND



Dometic Oceanair Skyscreen Concealed can be fully fitted into the headlining for a seamless finish. For challenging applications, the Skyscreen Concealed can be easily integrated into the hatch trims, allowing for a completely clear aperture and leaving only the push-release buttons visible when the blind is stowed. These easy to use buttons reveal the blind fabric when you want to cover the window, improving your on-board comfort and letting you enjoy a better night's sleep with both a flyscreen and blackout combination.

## BENEFITS WITH SKYSCREEN CONCEALED

- Quick release buttons available in 3 colours
- Recoil damper system
- Flyscreen and blackout combination
- Completely clear aperture when stowed

## SPECIFICATIONS

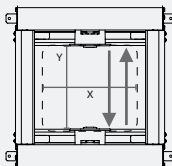
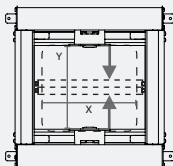
MANUAL CONTROLS	Quick Release Buttons x2 (≥ 801mm Requires x4 Buttons)
BLIND CONFIGURATION	Full Blind & Flyscreen Blind Only (Meet in Middle) Flyscreen Only (Meet in Middle)
FABRIC	Blackout Flyscreen Fabric Collection Specified
BUTTON HOUSING	White Chrome Dark Grey
HARDWARE	Silver Anodised (Standard) White / Black (Available to Order)





# ROLLER HATCH SCREEN COMBINATION BLIND



SKYSCREEN CONCEALED TECHNICAL DATA		
		
PRODUCT CODE: CSS	Full Travel	Meet in Middle
No. of Fabrics	2	1
Max Aperture Width (X)	830mm (32 <sup>11</sup> / <sub>16</sub> "	800mm (31 <sup>1</sup> / <sub>2</sub> "
Max Aperture Drop (Y)	960mm (37 <sup>13</sup> / <sub>16</sub> "	1600mm (62 <sup>63</sup> / <sub>64</sub> "
Trim Thickness		
Customer Specified	Max 24mm (1")	

Dimensions are intended as a guide only - Contact your nearest distributor for further details.