

PRODUCT INFO

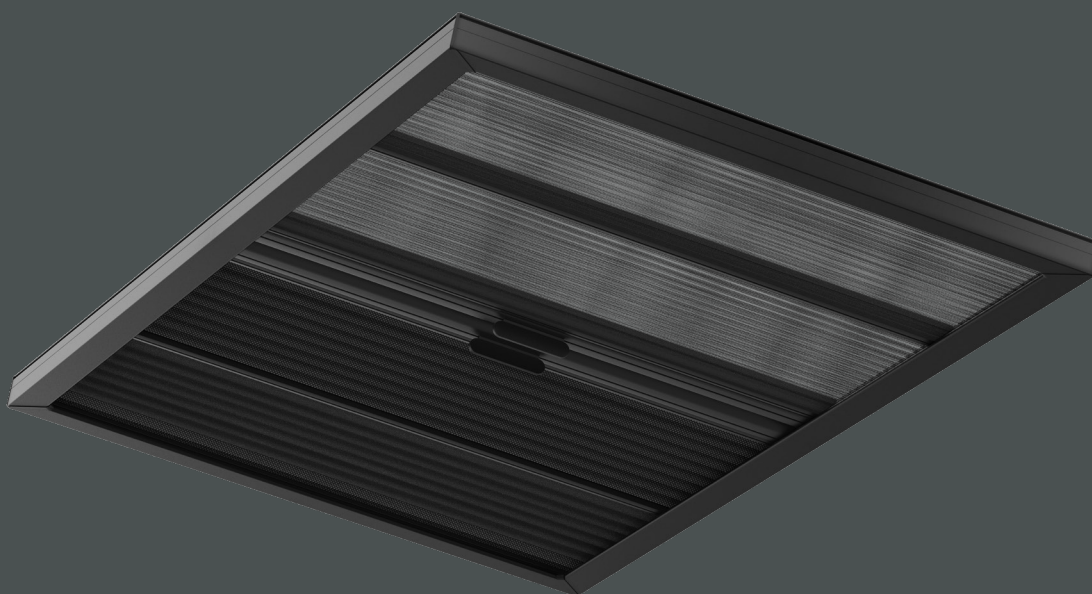
# DOMETIC SKYSOL MANUAL ROOFBLIND

Manual pleated roofblind ideal for larger windows and sunroofs, with the ability have curved or straight track applications

**GUIDEWIRE FREE**  
CLEAR APERTURES

**DUAL FABRIC OPTION**  
MULTIPLE SHADING FUNCTIONS

**CUSTOM FIT**  
SUITED TO YOUR STYLE



Mobile living made easy.



# THE IDEAL BLIND FOR LARGE WINDOWS & EXISTING SUNROOFS

A sleek solution crafted specifically for integration within fixed or sliding large sunroofs windows. Unlike traditional blinds, it operates seamlessly without guide wires, offering a clear aperture and tidy appearance. The Skysol Manual Roofblind is adaptable and can be curved to match various window shapes, ensuring a custom fit for your vessel. Featuring a reinforced cross bar, this blind is built for enhanced durability and strength. Its framed structure not only adds stability but also maintains an elegant look.

## Benefits with Dometic Skysol Manual Roofblind

- Integrated within pre-assembled frame for simple installation
- Dual fabric capability for multiple shading function
- No visible guidewires when the blind is stowed
- Robust moving rail, suitable for larger apertures
- Integrates perfectly with marine fixed or sliding sunroofs

## Specifications

DIMENSIONS	Min Width (X): 600mm Max Width (X): 2200mm Min Drop (Y): 800mm Max Drop (Y): 2600mm
FABRIC	Blackout/Privacy Honeycomb Blackout/Privacy Pleated Pleated Flyscreen Fabric Collection Specified
HARDWARE	Beige White Black
CURVED SUITABILITY	7.0m
MANUAL CONTROLS	Fixed Handle - Plastic, Chrome or Nickel
BLIND FORMAT	Double Ended (2x Fabrics) Single Ended (2x Fabrics) Single Ended (1x Fabric)



Mobile living made easy.

